



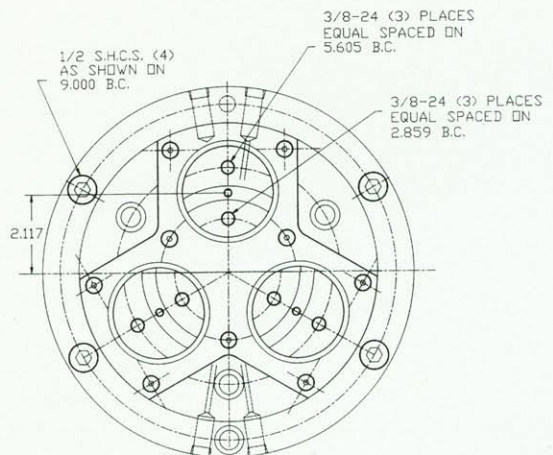
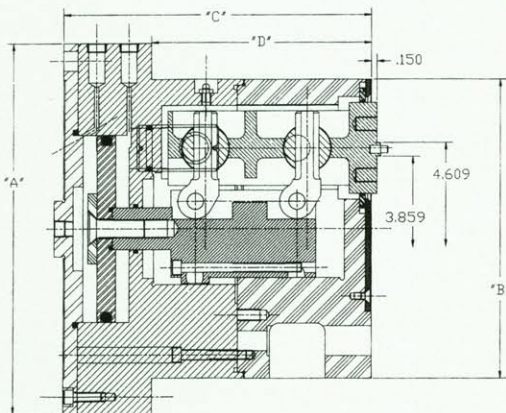
Models:

R1600
Internal and External

R4600
Internal and External

**HIGH QUALITY
POWER CHUCKS
WITH BUILT-IN
CYLINDERS**

R1600 8"
**Internal and
External**

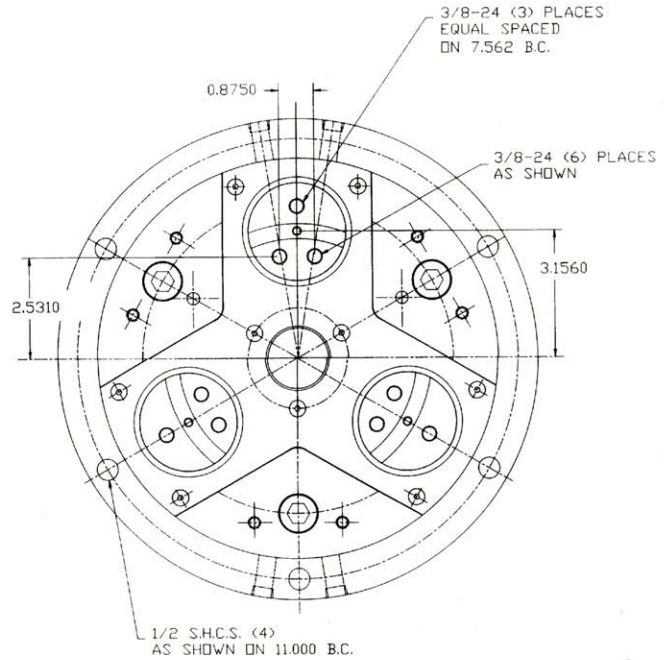
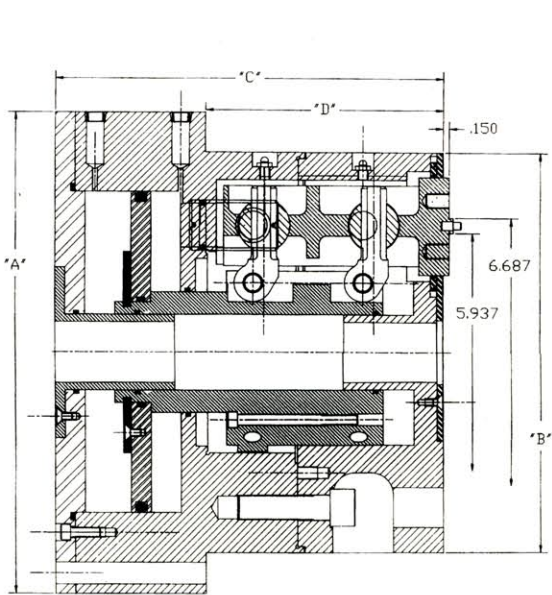


*Specializing in
Workholding Since 1946*

R1600 R4600 SERIES

Stage Allen
CHUCKS

Model R1600
Internal and External
10" Diameter



Model	Type	Maximum Hole Through	Maximum Weight	Chuck Diameter		Chuck Height		Total Jaw Travel	Piston Area		Maximum Pressure
				A	B	C	D		O.D. Clamp	I.D. Clamp	
R1600	3-Jaw		*	•	6.000	•	•	.250	•	•	•
	3-Jaw		110 lbs.	9.940	8.000	8.300	5.925	.250	18.64	19.63	458.48
	3-Jaw	1.500	160 lbs.	12.000	10.000	9.690	5.925	.250	43.18	47.49	189.51
	3-Jaw	3.500	*	•	12.000	•	•	.250	•	•	•
R4600	3-Jaw		*	•	6.000	•	•	.250 min. (depends on jaw length)	•	•	•
	3-Jaw		110 lbs.	9.940	8.000	8.300	5.925	.250 min. (depends on jaw length)	18.64	19.63	458.48
	3-Jaw	1.500	160 lbs.	12.000	10.000	9.690	5.925	.250 min. per jaw (depends on jaw length)	43.18	47.49	189.51
	3-Jaw	3.500	*	•	12.000	•	•	.250 min. per jaw (depends on jaw length)	•	•	•

* Indicates specials yet to be standardized.

For Firm Proposal, Submit Part Prints, Tool Layout and Machine Mounting Information

*Let Us Solve
Your Chucking
Problems*

STAGE-ALLEN CHUCKS, INC.
2246-50 West Minnesota Street
Indianapolis, Indiana 46221
(317) 632-2401
Fax: (317) 637-7563