



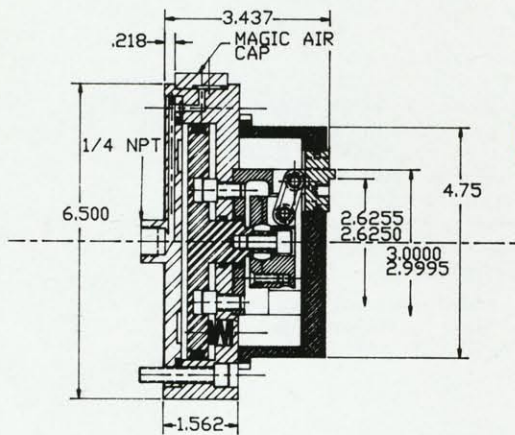
**Models:**

**20A**  
Internal and External  
Chucking  
Rotary or Stationary  
Sealed or Open

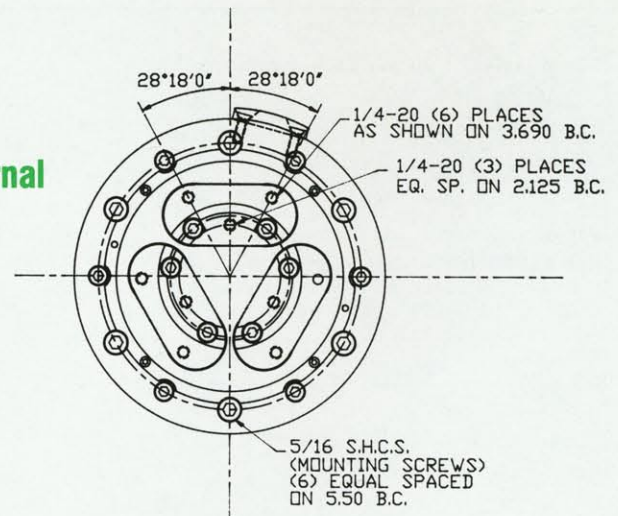
**23A**  
Internal Chucking  
Rotary or Stationary  
Sealed or Open

**29A**  
Internal and External  
Chucking  
2.00 Hole Thru  
Stationary  
Open Only

**HIGH QUALITY  
PRECISION  
CHUCKS**



**Model 20A**  
Sealed  
Internal and External



**Weight:** 16 lbs.

**Piston Effective Area:**

I.D. 18.64 Square Inches  
O.D. 18.04 Square Inches

**Jaw Travel:**

I.D. .025 Inches Max.  
O.D. .025 Inches Max.

**Recommended Part Range With Standard Jaws:**

I.D. .625" Min./5.94" Max.  
O.D. .281" Min./5.50" Max.

Capable of either internal or external gripping, remove the Magic Air Cap, rotate 180°, and reinstall.

*Specializing in  
Workholding Since 1946*

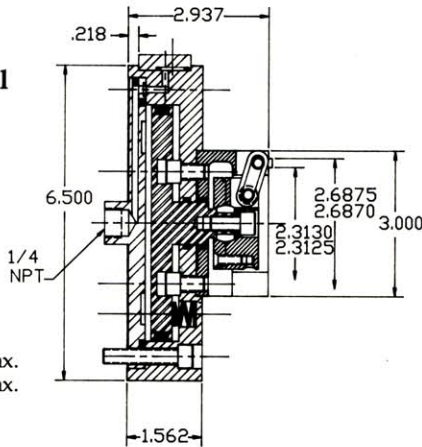
### Model 20A Unsealed Internal and External

Weight: 16 lbs.

**Piston Effective Area:**  
I.D. 18.64 Square Inches  
O.D. 18.04 Square Inches

**Jaw Travel:**  
I.D. .025 Inches Max.  
O.D. .025 Inches Max.

**Recommended Part Range  
With Standard Jaws:**  
I.D. .625" Min./3.875" Max.  
O.D. .281" Min./3.50" Max.



### Model 23A Sealed Internal Chucking

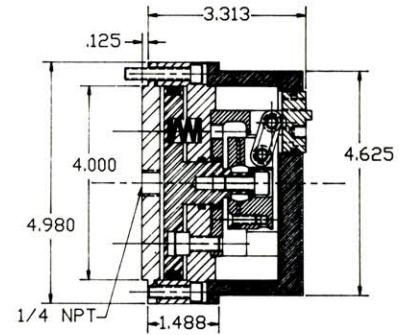
Weight: 16 lbs.

**Piston Effective Area:**  
I.D. 12.57 Square Inches

**Jaw Travel:**  
I.D. .025 Inches Max.

**Recommended Part Range With  
Standard Jaws**

I.D. .625" Min./5.94" Max.  
Capable of either internal  
or external gripping,  
remove the Magic Air Cap,  
rotate 180°, and reinstall.



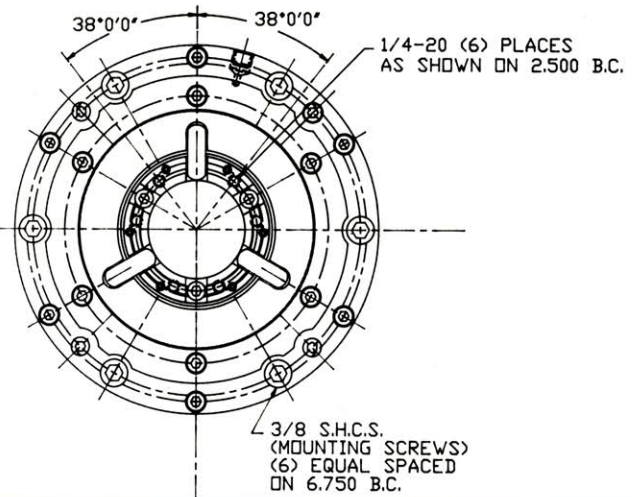
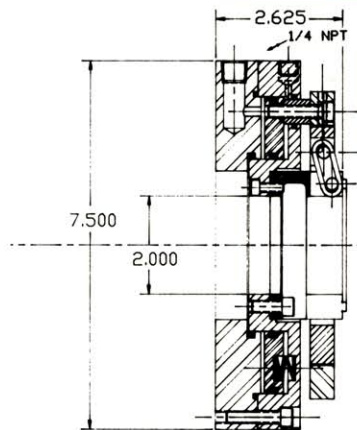
### Model 29A Unsealed Internal and External Chucking With 2.0" Hole Thru

Weight: 16 lbs.

**Piston Effective Area:**  
I.D. 17.76 Square Inches  
O.D. 18.94 Square Inches

**Jaw Travel:**  
I.D. .025 Inches Max.  
O.D. .025 Inches Max.

**Recommended Part Range  
With Standard Jaws:**  
I.D. .625" Min./3.875" Max.  
O.D. .281" Min./3.50" Max.



Blank Jaws for 20 Series — Open Models	
PART NO.	O.D. THICKNESS
25-1.....	.3" x 3/4"
25-2.....	.3" x 1 1/8"
25-3.....	.3" x 1 5/8"
25-4.....	.4" x 3/4"
25-5.....	.4" x 1 1/8"
25-6.....	.4" x 1 5/8"

Blank Jaws for 20 Series — Sealed Models	
16-1.....	.4" x 1"
16-2.....	.4" x 1 5/8"
16-3.....	.4" x 2 1/4"
16-4.....	.5" x 1"
16-5.....	.5" x 1 5/8"
16-6.....	.5" x 2 1/4"
16-7.....	.6" x 1"
16-8.....	.6" x 1 5/8"
16-9.....	.6" x 2 1/4"

3" and 4" diameter jaws have a .257" hole in center. Pie shape soft jaws are standard force Stace-Allen Chucks and can be finished according to the "Jaw Finishing Instructions" sheet in the literature. Jaw roughing fixtures are available to mount the jaw blanks for machining of most of the stock prior to finishing on the chuck. Aluminum jaws may be quoted on request. If desired, finished chuck jaws can be furnished.

**For best accuracy and optimum grip force, chuck jaws must be finished on a Stace-Allen Chuck.**

*For Firm Proposal, Submit Part Prints, Tool Layout and Machine Mounting Information*

*Let Us Solve  
Your Chucking  
Problems*

**STACE-ALLEN CHUCKS, INC.**  
2246-50 West Minnesota Street  
Indianapolis, Indiana 46221  
(317) 632-2401  
Fax: (317) 637-7563