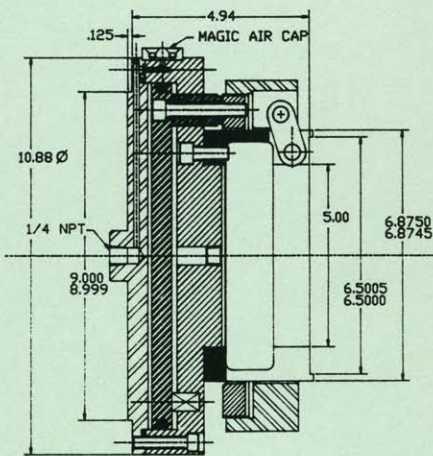




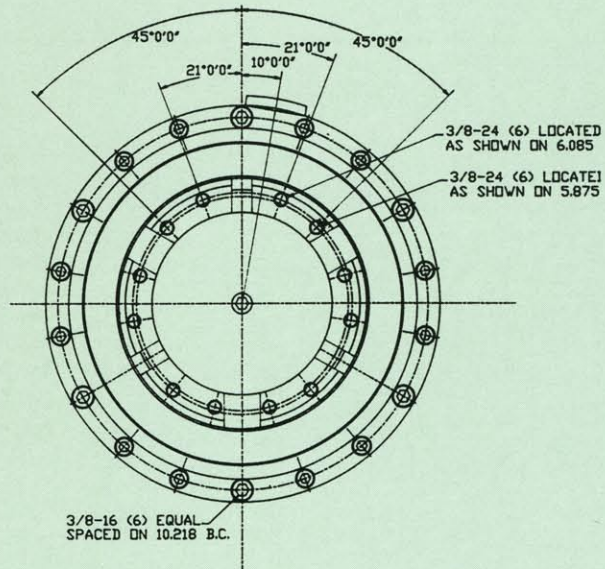
**Models:**

- 90A  
Internal and External Chucking
- 91A  
External Chucking
- 92A  
Coolant Through Center Internal and External Chucking
- 97A  
Holding Fixture with Hole Through, Internal and External Chucking or Double Acting
- 98A  
Deep Recess, Internal and External Chucking

**HIGH QUALITY  
PRECISION  
CHUCKS**



**Model 90A**



**Weight:** 75 lbs.

**Piston Effective Area:**  
I.D. 69.00 Square Inches  
O.D. 70.88 Square Inches

**Jaw Travel:**  
I.D. .030 Inches Max.  
O.D. .030 Inches Max.

**Recommended Part Range With Standard Jaws:**  
I.D. 2" Min./11.75" Max.  
O.D. 1.03" Min./11.00" Max.

Capable of either internal or external gripping, remove the Magic Air Cap, rotate 180°, and reinstall.

*Specializing in  
Workholding Since 1946*

### Model: 91A

#### O.D. Gripping Only

Weight: 75 lbs.

#### Piston Effective Area:

O.D. 70.88 Square Inches

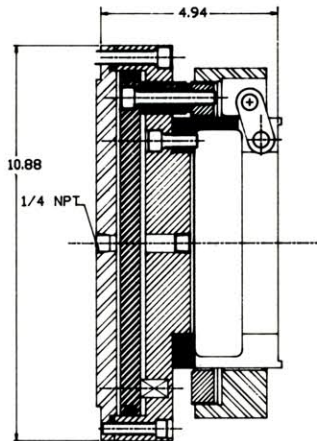
#### Jaw Travel:

O.D. .045 Inches Max.

#### Recommended Part Range

##### With Standard Jaws:

O.D. 1.03" Min./11.00" Max.



### Model 92A

#### Internal and External Chucking and Coolant Through

Weight: 75 lbs.

#### Piston Effective Area:

I.D. 67.00 Square Inches

O.D. 68.80 Square Inches

#### Jaw Travel:

I.D. .030 Inches Max.

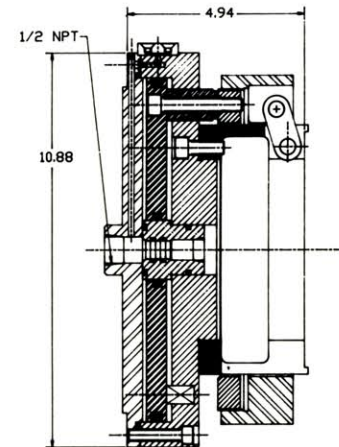
O.D. .030 Inches Max.

#### Recommended Part Range

##### With Standard Jaws:

I.D. 2" Min./11.75" Max.

O.D. 1.03" Min./11.00" Max.



### Model 97A

#### Internal and External Chucking Or Double Acting Hole Through Available Up to 4.75"

Weight: 68 lbs.

#### Piston Effective Area With 4.75" Hole Through:

I.D. 50.40 Square Inches

O.D. 52.20 Square Inches

#### Jaw Travel:

I.D. .030 Inches Max.

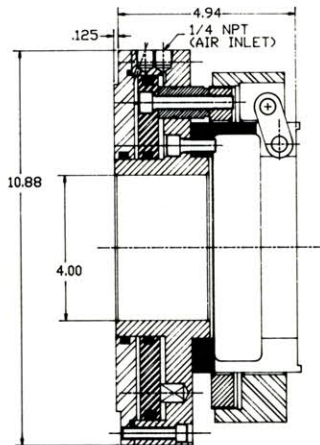
O.D. .030 Inches Max.

#### Recommended Part Range

##### With Standard Jaws:

I.D. 2" Min./11.75" Max.

O.D. 1.03" Min./11.00" Max.



### Model 98A

#### Internal and External Chucking Deep Clearance Hole

Weight: 69 lbs.

#### Piston Effective Area:

I.D. 50.40 Square Inches

O.D. 52.20 Square Inches

#### Jaw Travel:

I.D. .030 Inches Max.

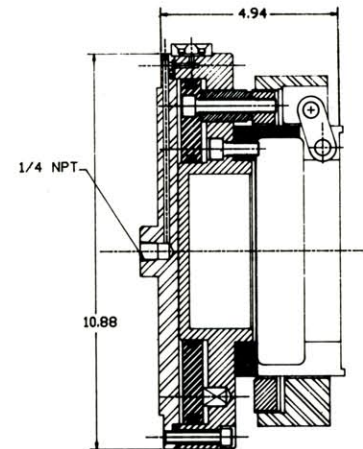
O.D. .030 Inches Max.

#### Recommended Part Range

##### With Standard Jaws:

I.D. 2" Min./11.75" Max.

O.D. 1.03" Min./11.00" Max.



PART NO.	O.D. THICKNESS
97-1.....	7 1/4" x 1 1/4"
97-2.....	7 1/4" x 1 5/8"
97-3.....	7 1/4" x 2 1/4"
97-4.....	8" x 1 1/4"
97-5.....	8" x 1 5/8"
97-6.....	8" x 2 1/4"
97-7.....	9" x 1 1/4"
97-8.....	9" x 1 5/8"
97-9.....	9" x 2 1/4"
97-10.....	10" x 1 1/4"
97-11.....	10" x 1 5/8"
97-12.....	10" x 1 1/4"
97-13.....	11" x 1 1/4"
97-14.....	11" x 1 5/8"
97-15.....	11" x 2 1/4"
97-16.....	12" x 1 1/4"
97-17.....	12" x 1 5/8"
97-18.....	12" x 2 1/4"

7", 8" diameter jaws have 1" hole in center. 9" and up diameter jaws have a 2" hole. Pie shape soft jaws are standard for Stace-Allen Chucks and can be finished according to the "Jaw Finishing Instructions" sheet in the literature. Jaw roughing fixtures are available to mount the jaw blanks for machining of most of the stock prior to finishing on the chuck. Aluminum jaws may be quoted on request. If desired, finished chuck jaws can be furnished.

**For best accuracy and optimum grip force, chuck jaws must be finished on a Stace-Allen Chuck.**

*For Firm Proposal, Submit Part Prints, Tool Layout and Machine Mounting Information*

*Let Us Solve  
Your Chucking  
Problems*

### STACE-ALLEN CHUCKS, INC.

2246-50 West Minnesota Street

Indianapolis, Indiana 46221

(317) 632-2401

Fax: (317) 637-7563